

MOUNTING INSTRUCTION WINCH 91

1. Remove screw (1).
2. Remove cap washer (2).
3. Remove circlip (3).
4. Pos. 4-13 can now be removed, and the winch base (14) is ready for next step.
5. Mark location of the bolt holes using the winch base as a template.
6. Remove the winch base. Be sure that no dust comes into contact with the winch while drilling the bolt holes.
7. Drill the bolt holes $\varnothing 6.5\text{mm}$.
8. Clean the area.
9. Apply a light coat of bedding compound, ensuring that each hole is bedded.
10. Fasten the winch base into place using 6 pcs M6 countersunk head screws. Use large washers or a backing plate.
11. Assemble in reverse order.
12. Check that the winch is functioning correctly.

SERVICE INSTRUCTION WINCH 91

Maintenance interval 1-2 years, depending on operating conditions.

(Dismantling procedure according to Mounting Instruction no. 1-4 above)

1. Clean all moving parts with benzene.
2. Check pawls & springs (5, 13) for wear and replace if necessary.
3. Reassemble the winch lightly greasing all moving parts.

Service Kit No. 14 (part no. 710014) contains service parts for this winch.

PARTS LIST WINCH 91 ver 1.0

POS	QTY	DESCRIPTION	PART NO.
1	1	SCREW M6 X 10	DIN964-A4-M6X10
2	1	CAP WASHER	964600
3	1	CIRCLIP $\varnothing 10$	DIN6799-10
4	1	WINCH TOP 91	961100
5	1	PAWL W/SPRING	962001
6	1	CIRCLIP	DIN471-A2-A8
7	1	WASHER $\varnothing 30$	961200
8	1	WINCH DRUM 91	960703
9	1	WINCH HANDLE 91	510911
10	1	DRIVE SOCKET	961405
11	1	WASHER $\varnothing 79$	961600
12	1	CIRCLIP	DIN471-A2-A8
13	1	PAWL W/SPRING	962001
14	1	WINCH BASE 91	961300



DETAIL, PAWL MOUNTING DIRECTION.

SAFETY NOTICES

ALL WINCHES



Read All Safety Notices and Product Manuals

Do not install or operate this winch before reading and fully understanding the contents of this Safety Notice Sheet and the Product Manual.



Stay Alert When Operating

Andersen winches are very powerful and have the potential to cause significant damage and/or serious injury if used improperly or without due caution and vigilance.



Operators Must Be Trained

Help prevent significant damage and/or serious injury by ensuring any person operating a winch has a thorough understanding of its proper operation and is aware of the potential hazards involved. As a minimum, all winch operators must read and understand this Safety Notice Sheet and the Product Manual. Particular attention is drawn to the following points:

- Children and others not qualified to operate an electric winch must be kept at a safe distance from the winch and any rigging or fittings that are under load.
- Long hair and/or loose clothing must be tied back to avoid being caught in the winch.
- In the event of a rope override or other fault, stop the winch and turn off power before attempting to resolve the problem.



Avoid Accidental Operation

Remove winch handles and turn off power to the winch when not in use to help avoid unsupervised or unintentional operation. Failure to do so could result in significant damage and/or serious injury.



Maintenance

Turn off power to the winch before performing any maintenance or service tasks. Failure to do so could result in significant damage and/or serious injury.



Lifting Operations

The winch must not be operated with the rope in the self tailer when used in any kind of lifting operation.

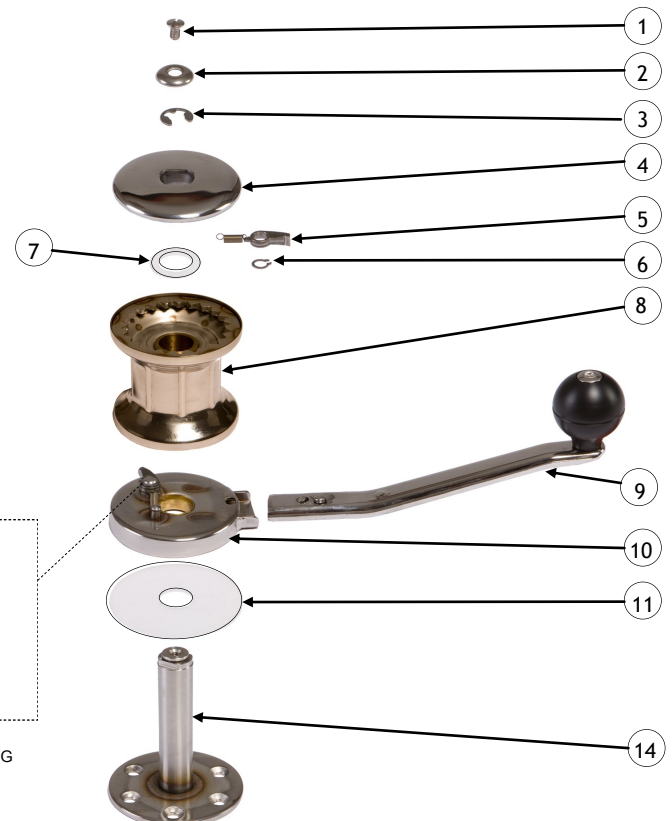
Any lifting operations should be conducted by two persons in order to maintain constant visual contact with the object being lifted.

Furthermore the selftailer must not be used as a cleat for a rope used to lift or suspend any object. The rope must be secured properly by tying off, or leading to a suitable fitting such as a cleat or bollard.

Failure to observe these precautions could result in serious injury or death.

DO NOT DISCARD

EXPLODED VIEW WINCH 91



WORLD WIDE DISTRIBUTION & SERVICE

(FOR UPDATED DISTRIBUTOR LIST, PLEASE SEE WWW.ANDERSENWINCHES.COM)

WARRANTY

Refer to our website www.ronstan.com/warranty for our warranty terms and conditions

Part no.: 710291

Manual
WINCH 91
ver. 1.0

